



*Pure & Original*

## FRESCO - LIME PAINT

100% ECOLOGICAL AND NATURAL

Fresco – Lime paint is ready for use and developed according to DIN 55945. Fresco is meant to be used inside and is composed of pure, slaked lime and natural pigments. 100% mineral and very environmentally friendly.

**Appearance:** very dim, powdery with colour nuances. The appearance is determined by the way of appliance.

**Colours:** according to the Pure & Original colour chart.

**Appliance:** Fresco is applied on lime plaster, cement plaster, sucking dimension stone or other mineral foundations. The foundation must be suitable for lime paint (absorbing and not water resistant). Strongly sucking surfaces (without reparation spots) must first be coated with Pure & Original Wallfix. In case of irregular sucking, the Wallprim must be applied first. Oil containing and non-mineral foundations, like latex and synthetic paint, must be coated with Pure & Original Wallprim first.

Apply Fresco with a longhair block brush, cloth or sponge. It is also possible to slightly moisten the surface before painting, or applying the paint with a cloth. ( Al Fresco ).

1st layer, dilute with water 15% to 50%, dependent on desired effect and suction.

2nd layer, undiluted or dilute up to 15% with water, according to the desired look. When diluting, use the same amount of water to avoid differences in colour. Always stir well before use.

The colour, the characteristic of lime paint is that this varies in accordance to suction of the foundation and the way of appliance. Always place a test space for a correct representation of colour and effect.

Apply with 2 layers. Repaintable after 8 hours. Wait 24 to 48 hours and apply a new undiluted layer if the paint shines through too much.



### Product characteristics

- ready to use
- no yellowing
- 100% recyclable
- does not turn green!
- good coating ability
- vapour permeable!
- no pressure
- no synthetic thickening agent
- germ and mould resistant
- lime dim effect
- inflammable
- lightly washable

**Lime paint on wood / MDF:** polish untreated wood with sandpaper and degrease with Pure & Original Super Cleaner. When the vein becomes visible, strongly dilute the lime paint (max 85%). Apply undiluted for a covering look. To get a robust effect, 2 layers should be applied and slightly polished.

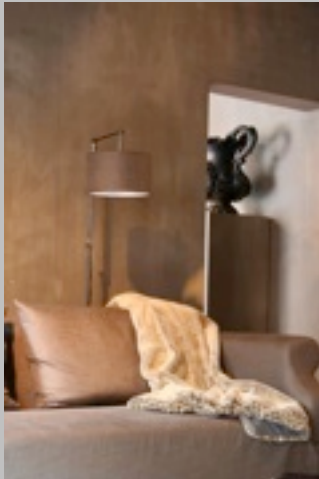
Wood needs to be sufficiently dry to prevent the wood from deflating.

Package: available in 1L, 2,5L, and 5L.



## FRESCO - LIME PAINT

### The original Lime Paint.



#### Characteristics of lime paint :

Colours of the lime painted surface can fade due to the influence of temperature, foundation and humidity. This is typical of lime paint. To reduce this characteristic, multiple layers should be applied and smoothed. Lime paints can undergo weathering in an early stage due to the foundation characteristics, the type of object, weather pressure and harmful substances from the atmosphere.

This is a characteristic of the natural material of lime paint as well, and is therefore no product defect. The first layer of dark colours can give a rather patchy effect, which reduces after applying multiple layers. Lime paint cannot be retouched. This causes a colour aberrance because of the quick absorption of moisture in the wall and the appearance of lime.

#### Systems

Recommended systems: 1st layer WallFix or Wallprim, according to the porosity of the foundation. 2nd and 3rd layer Fresco. To achieve more effect, put the brush in water beforehand, put it in the paint subsequently and do not apply the 2nd layer entirely covered. A sponge or clothe heightens the effect as well.

#### Bathroom – kitchen

Lime paint is lightly washable and very porous, therefore it will quickly absorb water and fat.

Direct water and or much moisture can leave traces of water. To prevent this, it is possible to seal the paint with the Dead Flat Eco Sealer. Afterwards, you can clean the surface very well. Attention, applying layers that are too thick or irregular can cause a white haze (especially on dark colours).

#### Conditions for appliance

Temperature ; >5°C, <35°C ( air, surface and material)

Relative humidity: 85% max. Keep away from frost.

Use with temperatures between 5°C and 35°C

**Colour abnormalities** according to colour steel are dependent on material.

#### Basic information white paint at 20°C

Specific gravity	: +/- 1.4g/cm <sup>3</sup>
Theoretical efficiency	: 8 – 10 m <sup>2</sup> per Litre
Drying time : dust free	: 2 – 3 hours
Repaintable	: at least after 8 hours
Flashpoint	: not applicable
pH	: +/- 13

#### Sustainability

Kept in original package and on a dry and frost free place 6 – 12 months. Not mixable with other paints.

#### Cleaning

Clean spots and spilled Pure & Original Fresco immediately with water and soap.

#### Technical advise

Not all actual prevalent surfaces and their treatments can be dealt with in this technical information magazine. Therefore, it is advisable to ask your supplier for advice in specific situations. This technical information was compiled after the newest techniques in painting. Liability for general validity of this advise must be rejected, because appliance and working techniques are beyond our influence and major differences in the kind of surface continually need adjustment of procedure according to the insight of a competent user.

For further information you can visit the Pure & Original site. [www.pure-original.com](http://www.pure-original.com).